



SEVERE DUTY HUB CAPS™



All hardware is included.



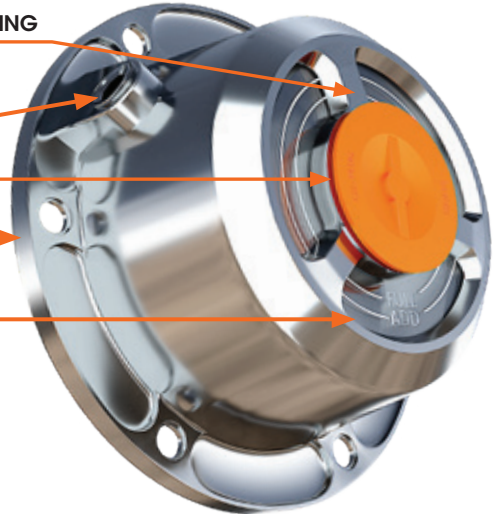
SPOKES TO PREVENT LENS CRACKING

SIDE FILL WITH MAGNETIC PLUG CAPTURES METAL SHAVINGS

REMOVABLE CLOG FREE PLUG

THICKER FLANGE & BODY

ONE SOLID UNIT
No separate window kit



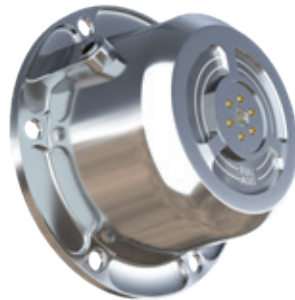
HUBCAP INCLUDES HEAT-CHECK BOLT®
Pops at 250°



RT-0003

HUB CAP CROSS REFERENCE					
APPLICATION	RevHD	Stemco	SKF	National	
Oil	Steer	RHO-S01	Oil cap numbers ending with 4024	1612, 1711 or 1811	Oil cap numbers ending with 024 or 024A
	TN Trailer	RHO-T03	Oil cap numbers ending with 4009, 4046 or 5009	1643, 1644 or 1743	Oil cap numbers ending with 009 or 009A
	TP Trailer	RHO-T04	Oil cap numbers ending with 4195	1696 or 1796	Oil cap numbers ending with 195 or 195A
Grease	TN Trailer	RHG-T03	Grease cap numbers ending with 4009, 5096 or 5097	1343	Grease cap numbers ending with 009 or 009A
	TP Trailer	RHG-T04	Grease cap numbers ending with 4195	1399	Grease cap numbers ending with 195 or 195A
PSI Oil	TN Trailer	RHO-T03PSI	Oil cap numbers ending with 4370, 4350 or 4373	1943	Oil cap numbers ending with 350
	TP Trailer	RHO-T04PSI	Oil cap numbers ending with 343-4372	1996	-
PSI Grease	TN Trailer	RHG-T03PSI	Grease cap numbers ending with 340-4370 or 340-4350	1443	-
	TP Trailer	RHG-T04PSI	Grease cap numbers ending with 340-4372	1499	-

PSI Oil Hub Cap



Grease Hub Cap



CHECK OUT OUR ENTIRE LINE OF SEVERE DUTY PRODUCTS

Including seals, spindle nuts, hub caps, bearings, spacers, and oil pan

